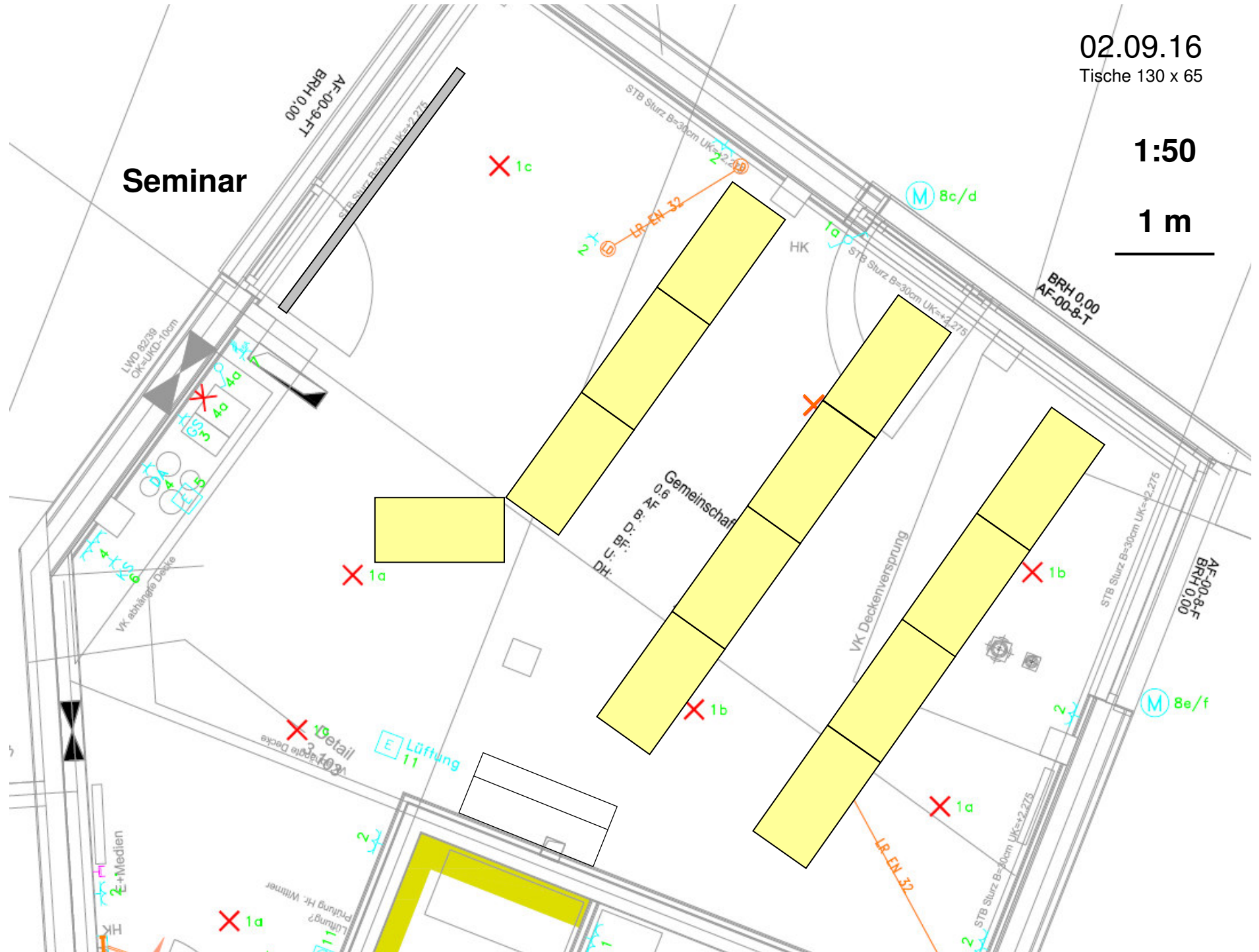


02.09.16

Tische 130 x 65

1:50

1 m

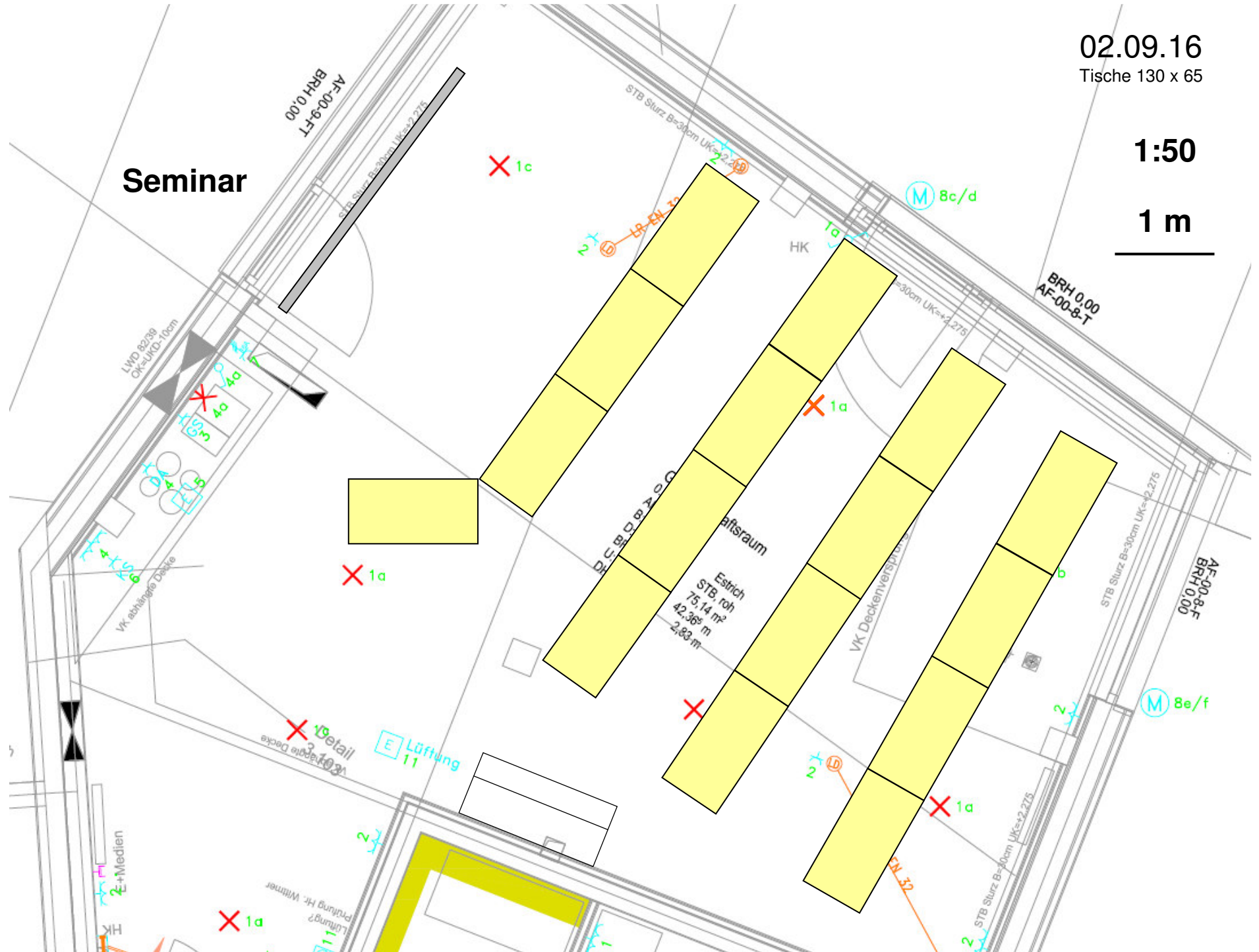


02.09.16

Tische 130 x 65

1:50

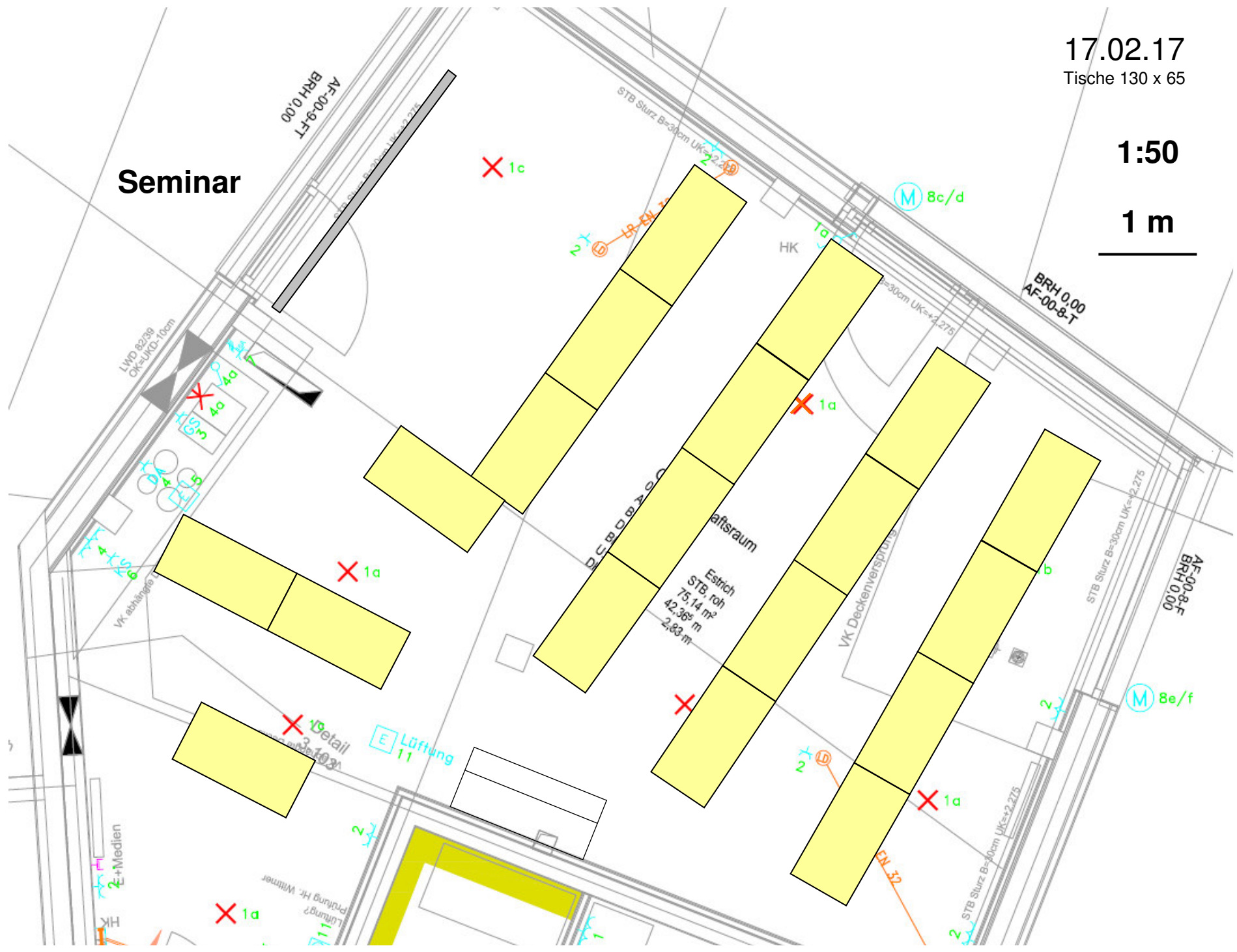
1 m



17.02.17
Tische 130 x 65

1:50
1 m

Seminar



02.09.16

Tische 130 x 65

1:50

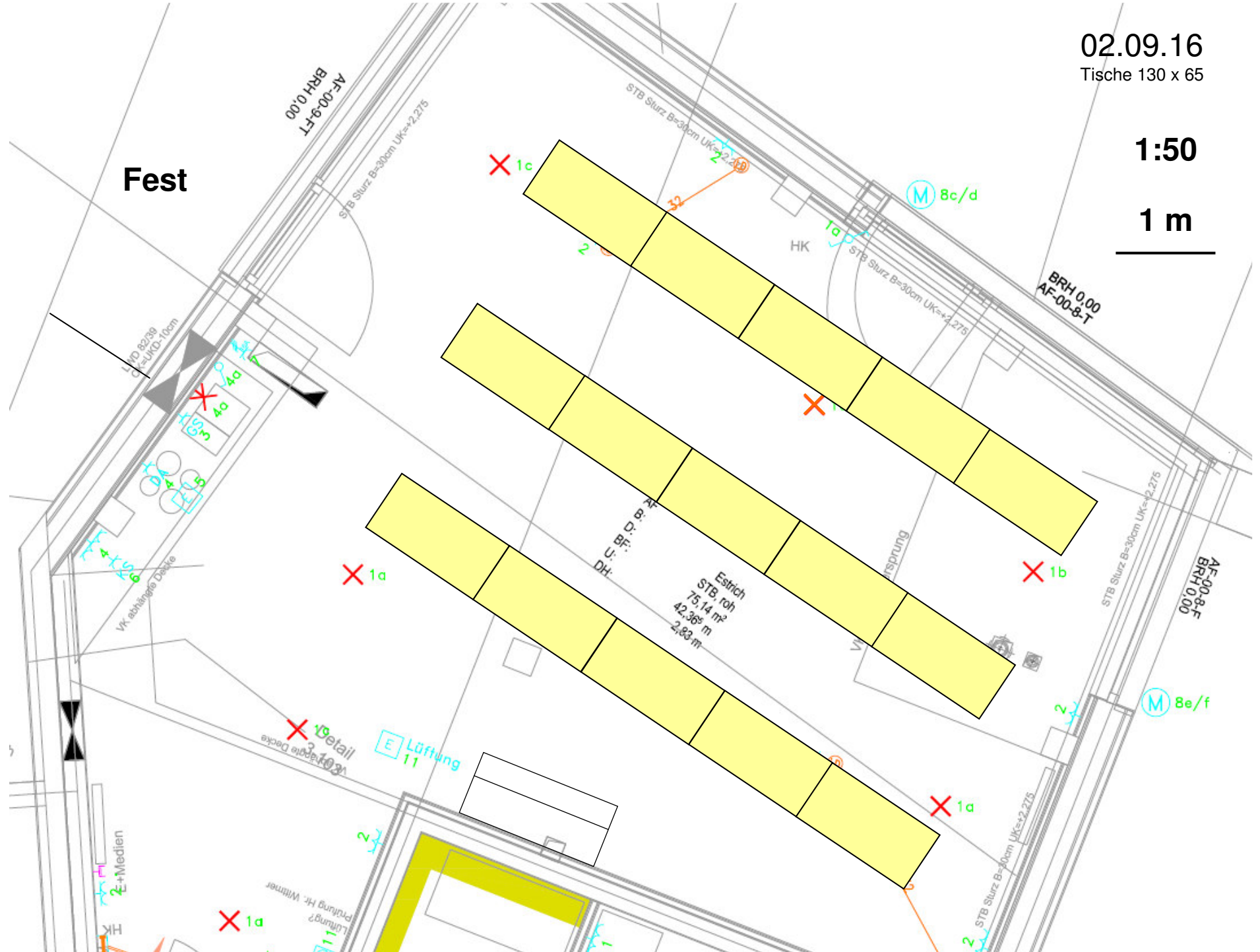
1 m



02.09.16
Tische 130 x 65

1:50

1 m

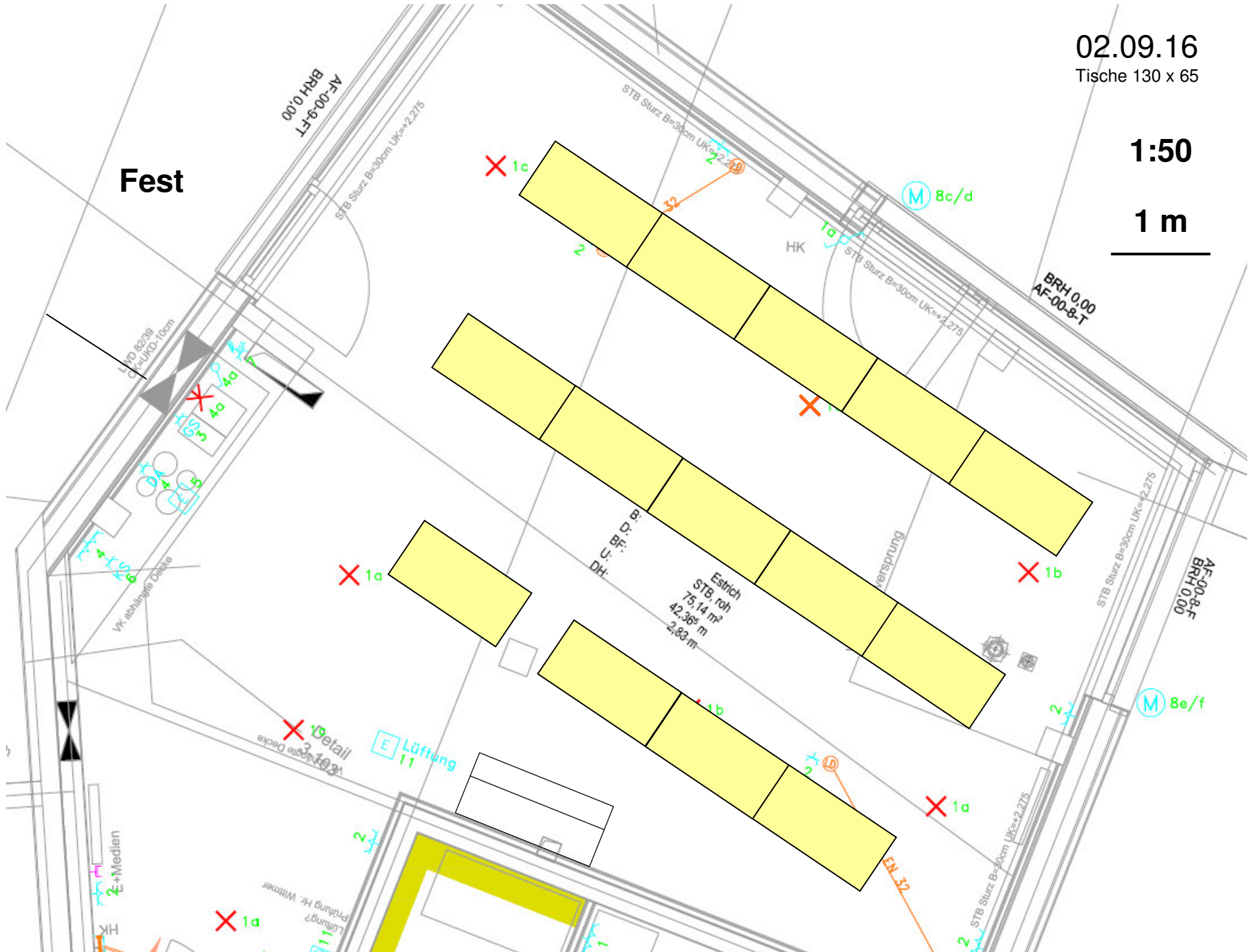


02.09.16

Tische 130 x 65

1:50

1 m



Fest

BRH 0.00
AF-00-9-F-T

STB Sturz B=30cm UK=+2.275

STB Sturz B=30cm UK=+2.275

M 8c/d

HK

STB Sturz B=30cm UK=+2.275

BRH 0.00
AF-00-8-T

Lüftung 82/38
C=UKD=10cm

Vk abhängige Decke

C.F. B.F. P. B.
DH

Estrich
STB, roh
75,14 m²
42,36 m
2,83 m

versprung

STB Sturz B=30cm UK=+2.275

AF-00-8-F
BRH 0.00

Detail
abhängige Decke

E Lüftung
11

E+Medien

1a

Lüftung?
Prüfung Hr. Wimmer

EN 32

STB Sturz B=30cm UK=+2.275

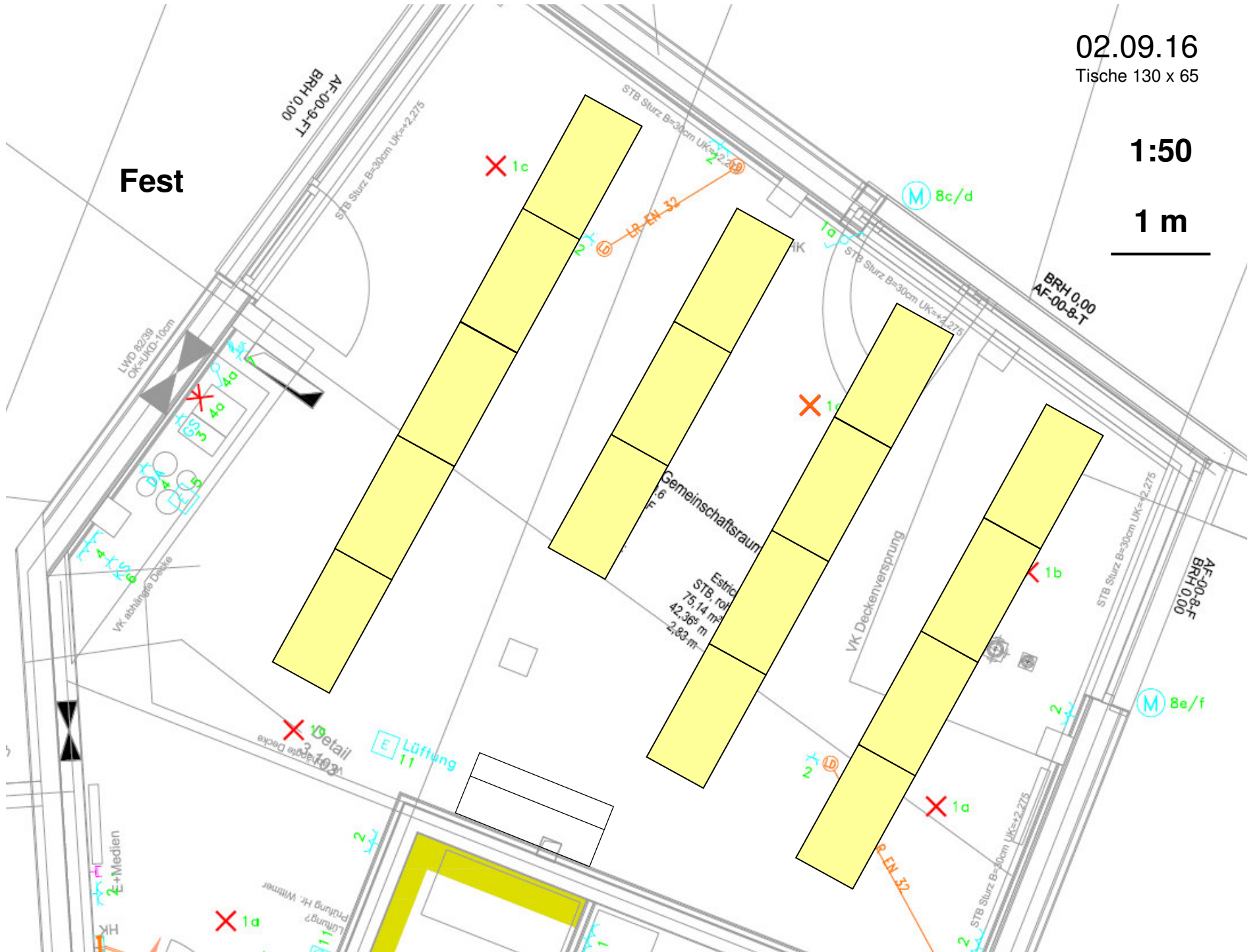
M 8e/f

02.09.16

Tische 130 x 65

1:50

1 m

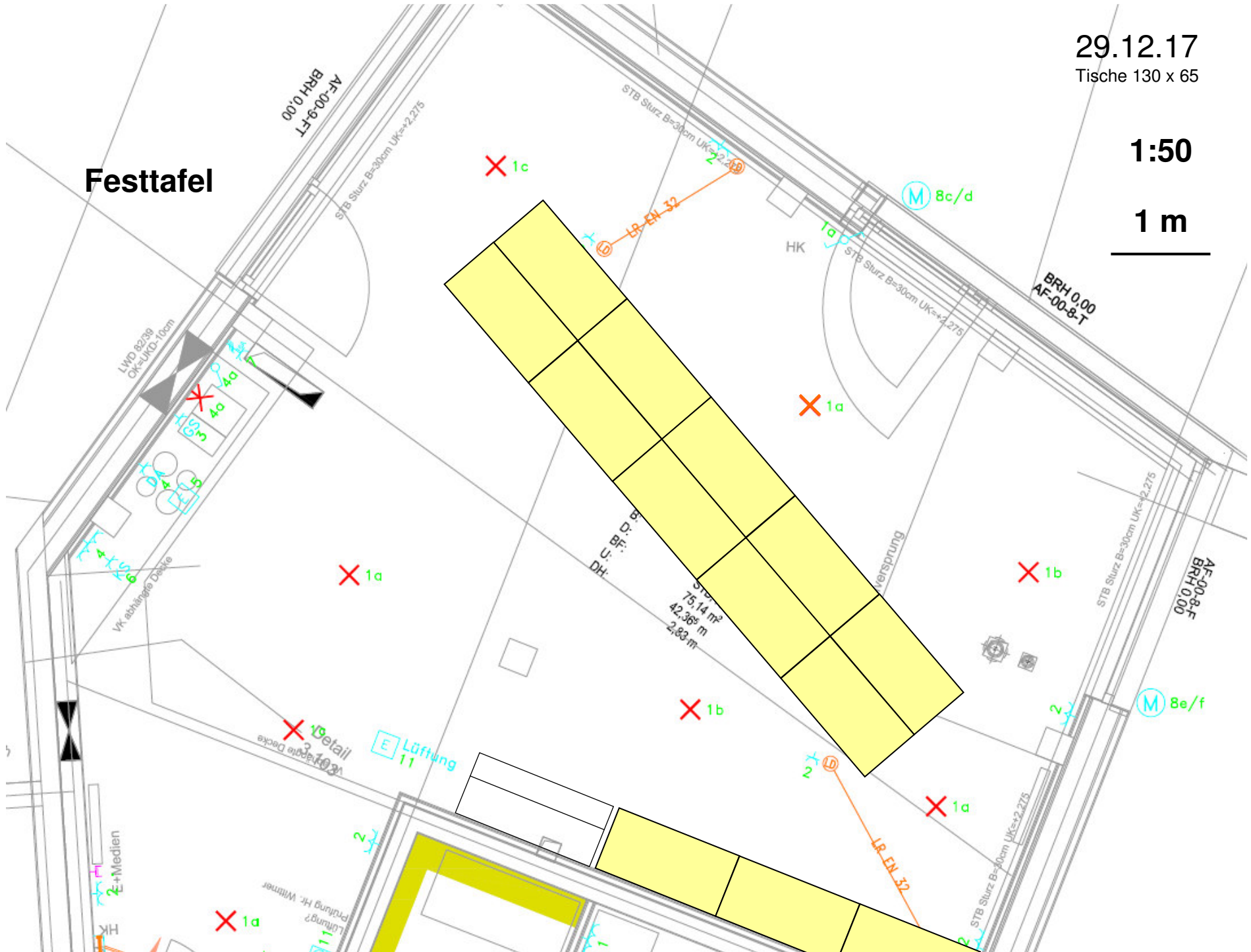


29.12.17

Tische 130 x 65

1:50

1 m



02.09.16

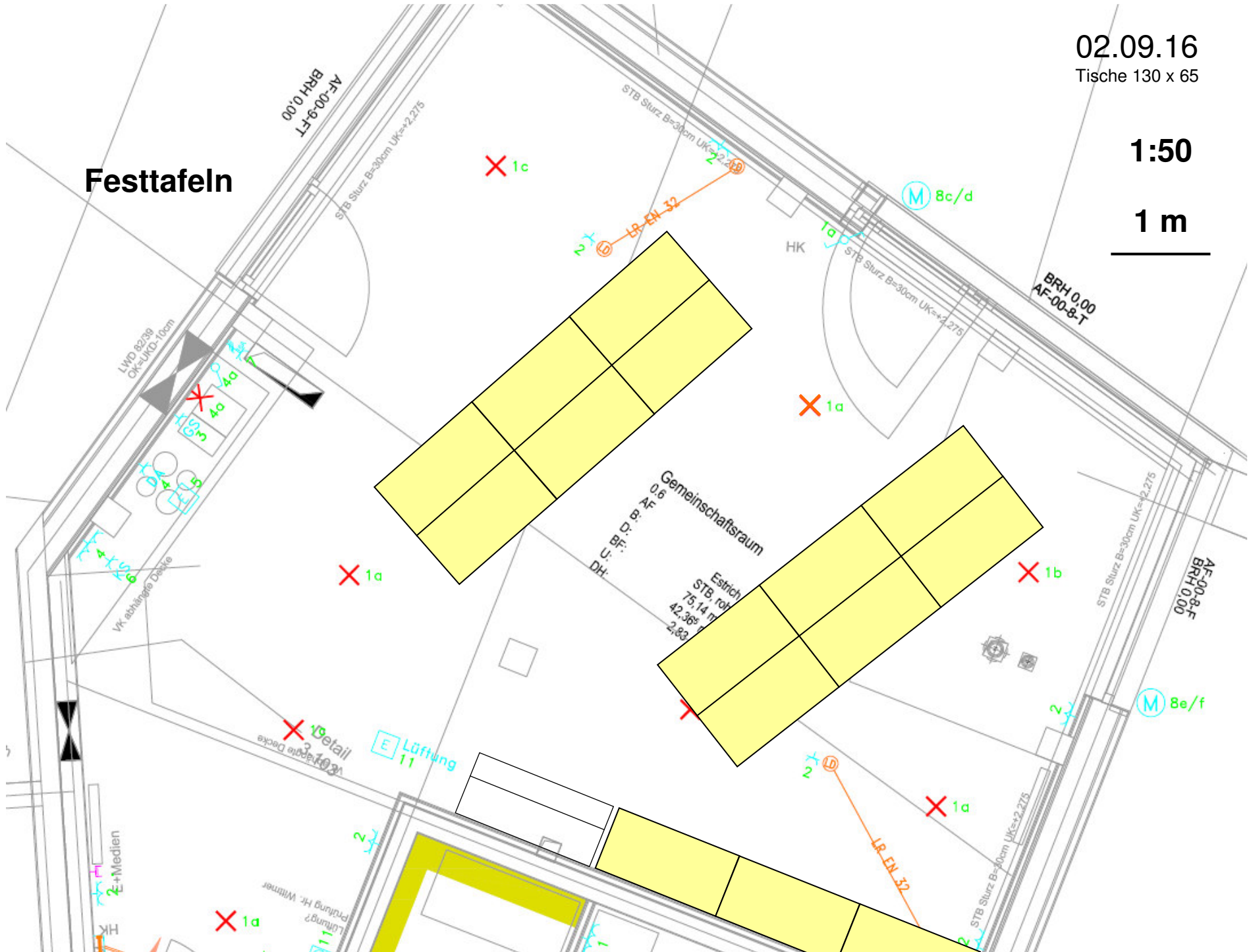
Tische 130 x 65

1:50

1 m



Festtafeln



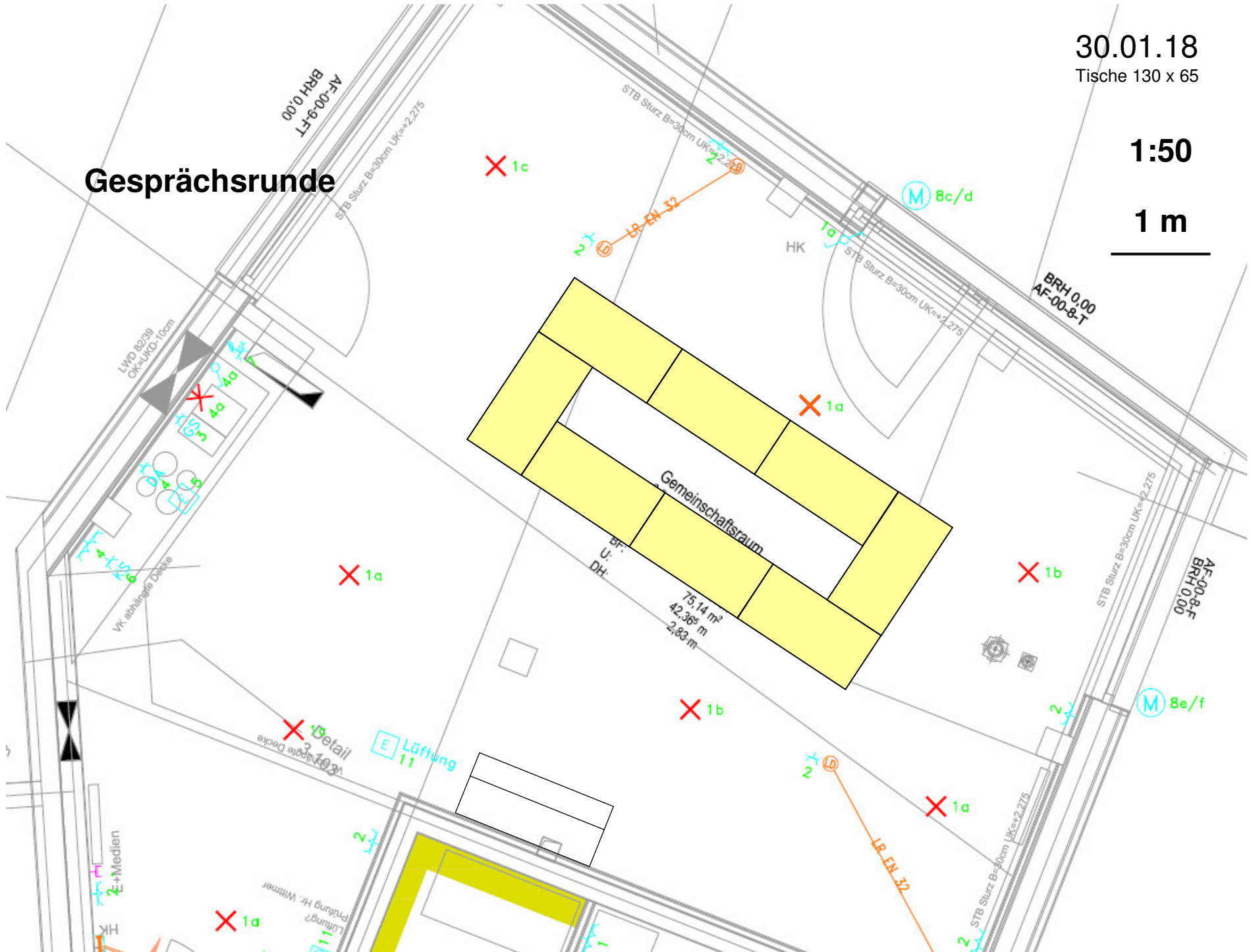
30.01.18

Tische 130 x 65

1:50

1 m

Gesprächsrunde



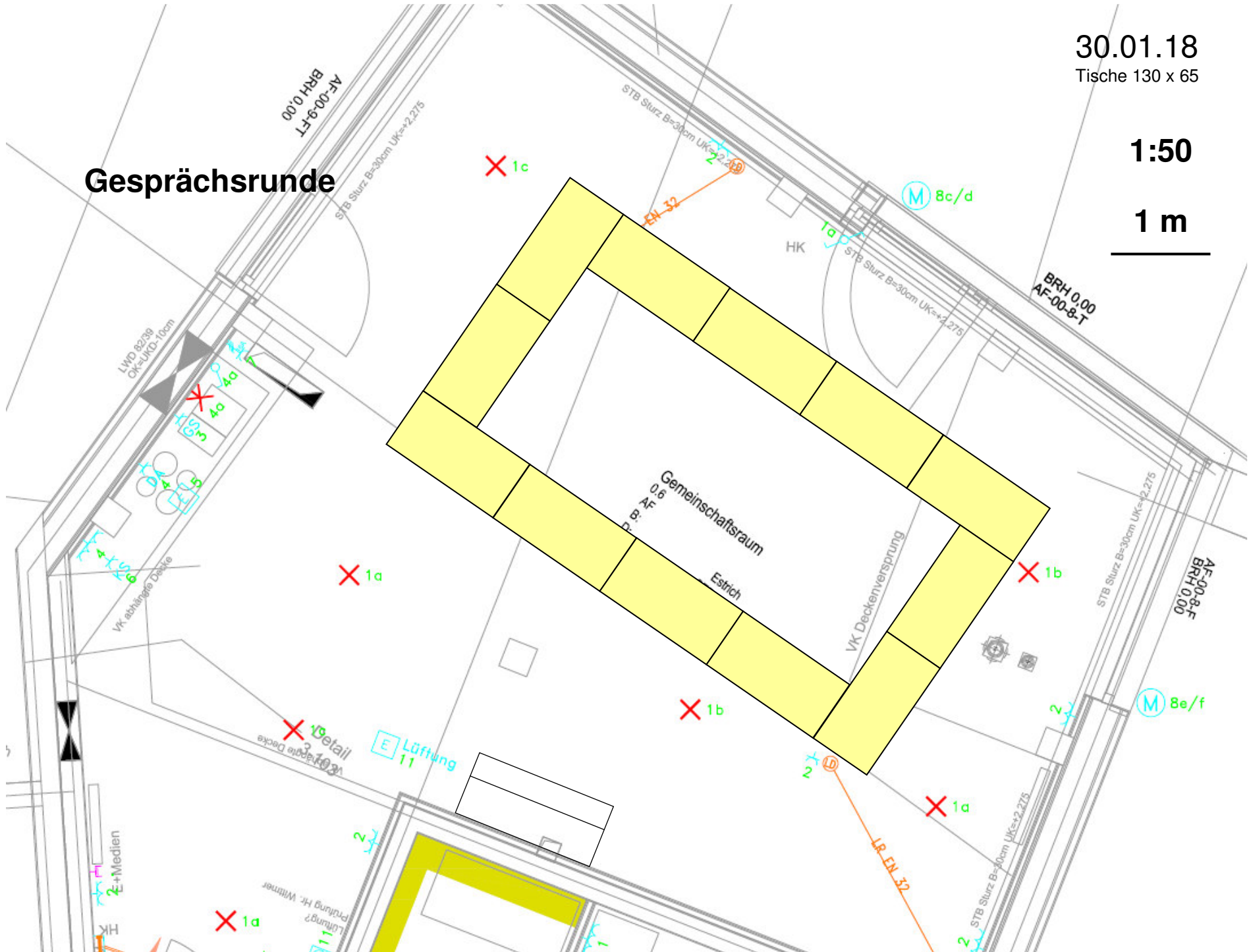
30.01.18

Tische 130 x 65

1:50

1 m

Gesprächsrunde

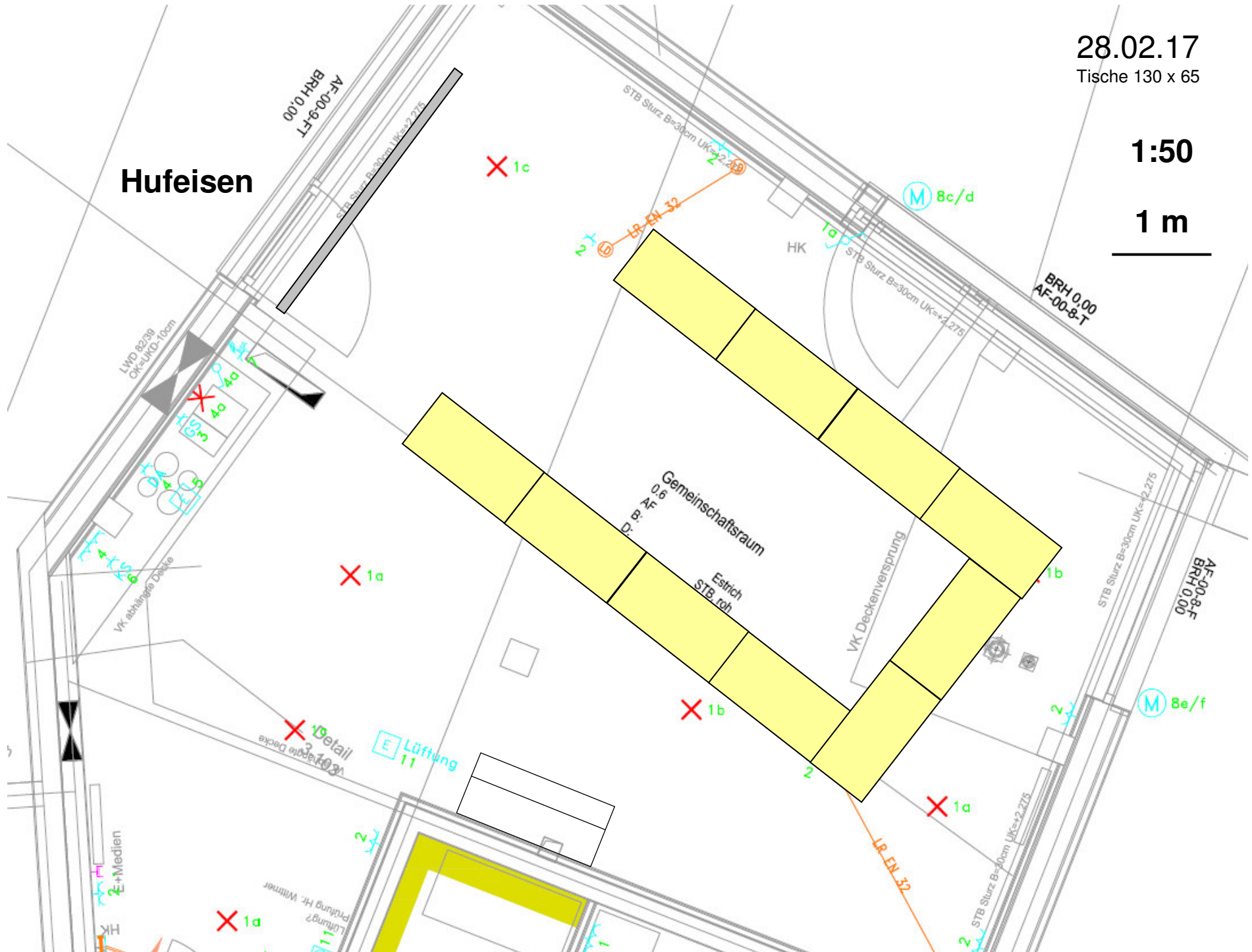


28.02.17

Tische 130 x 65

1:50

1 m

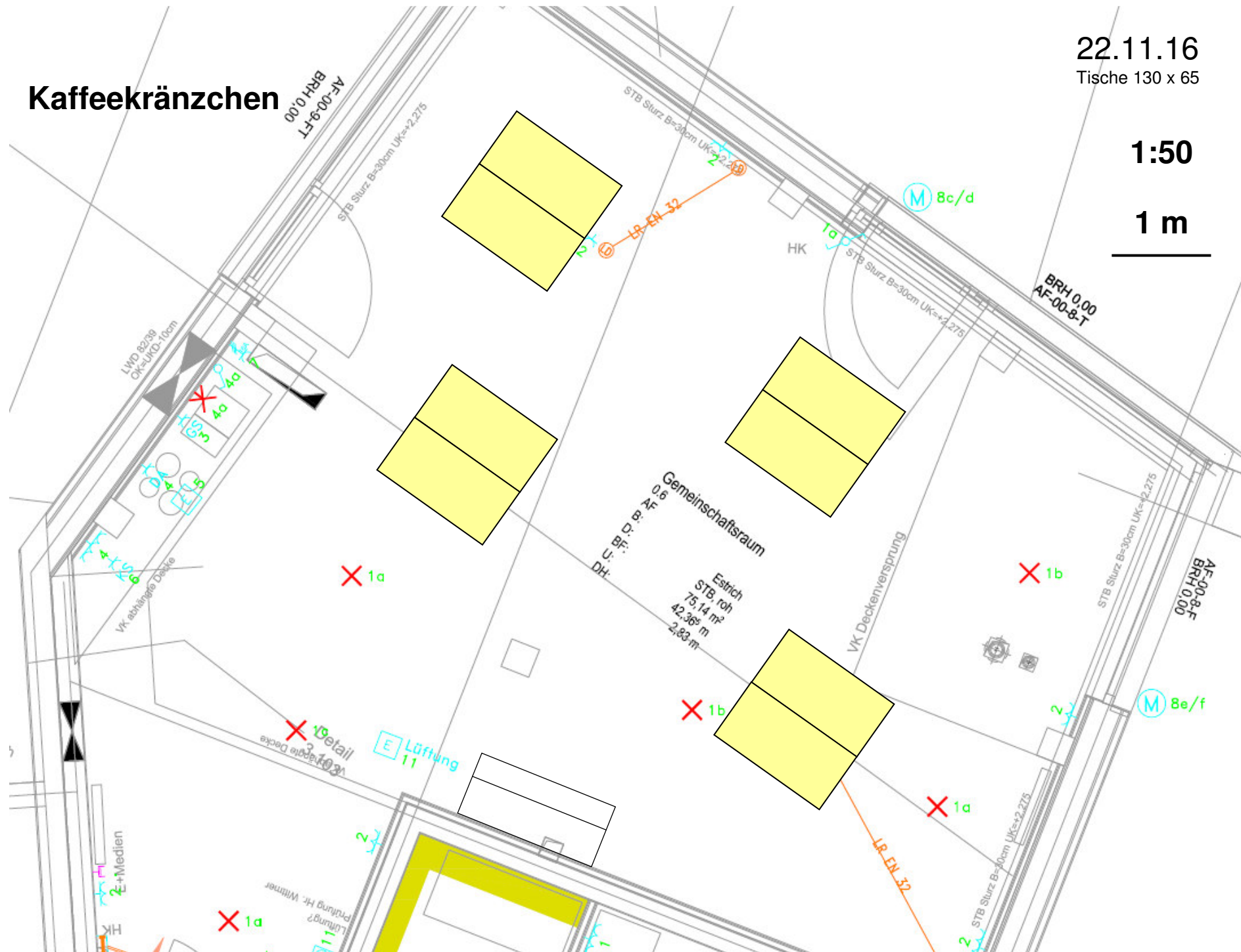


Kaffeekränzchen

22.11.16
Tische 130 x 65

1:50

1 m



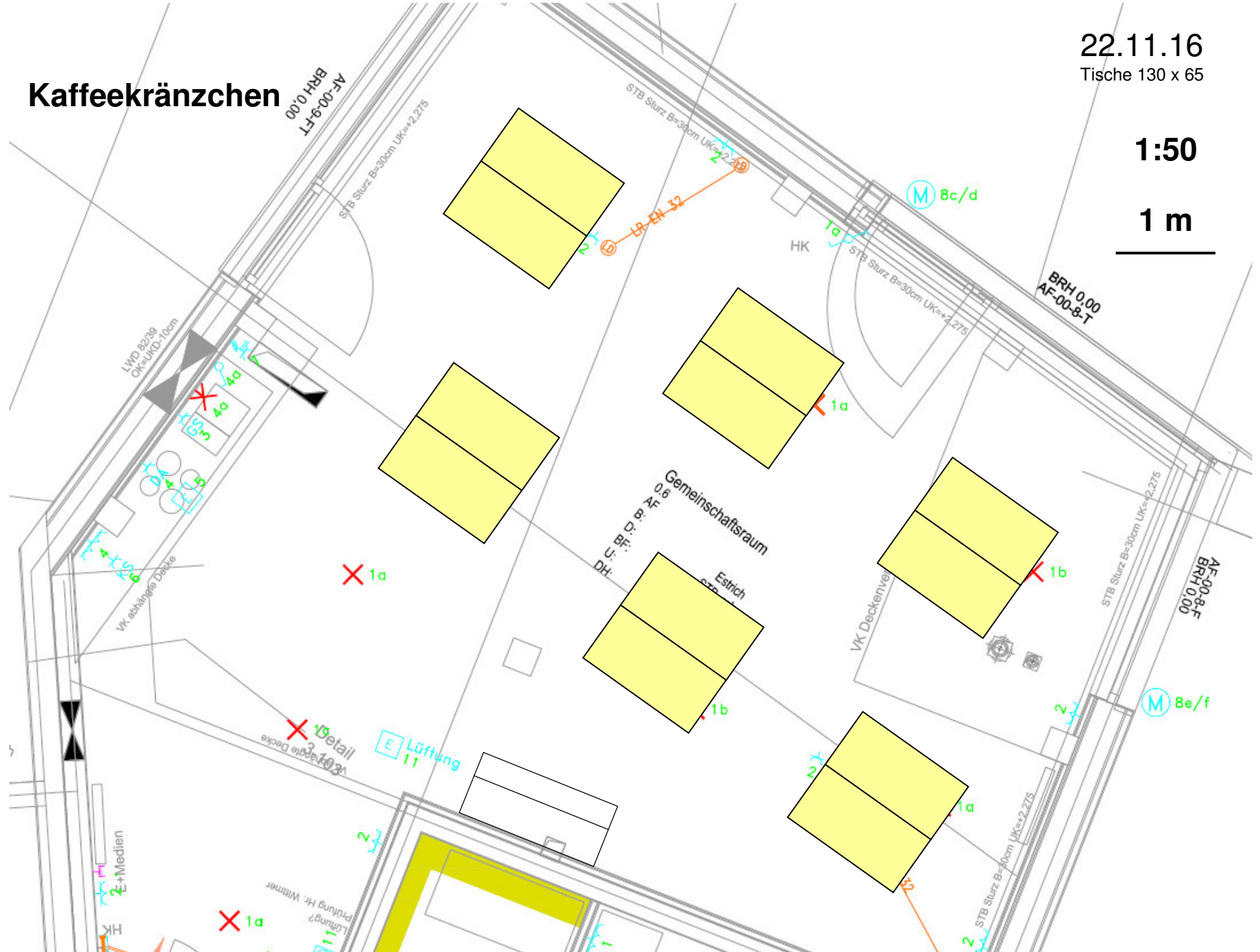
Kaffeekränzchen

22.11.16

Tische 130 x 65

1:50

1 m



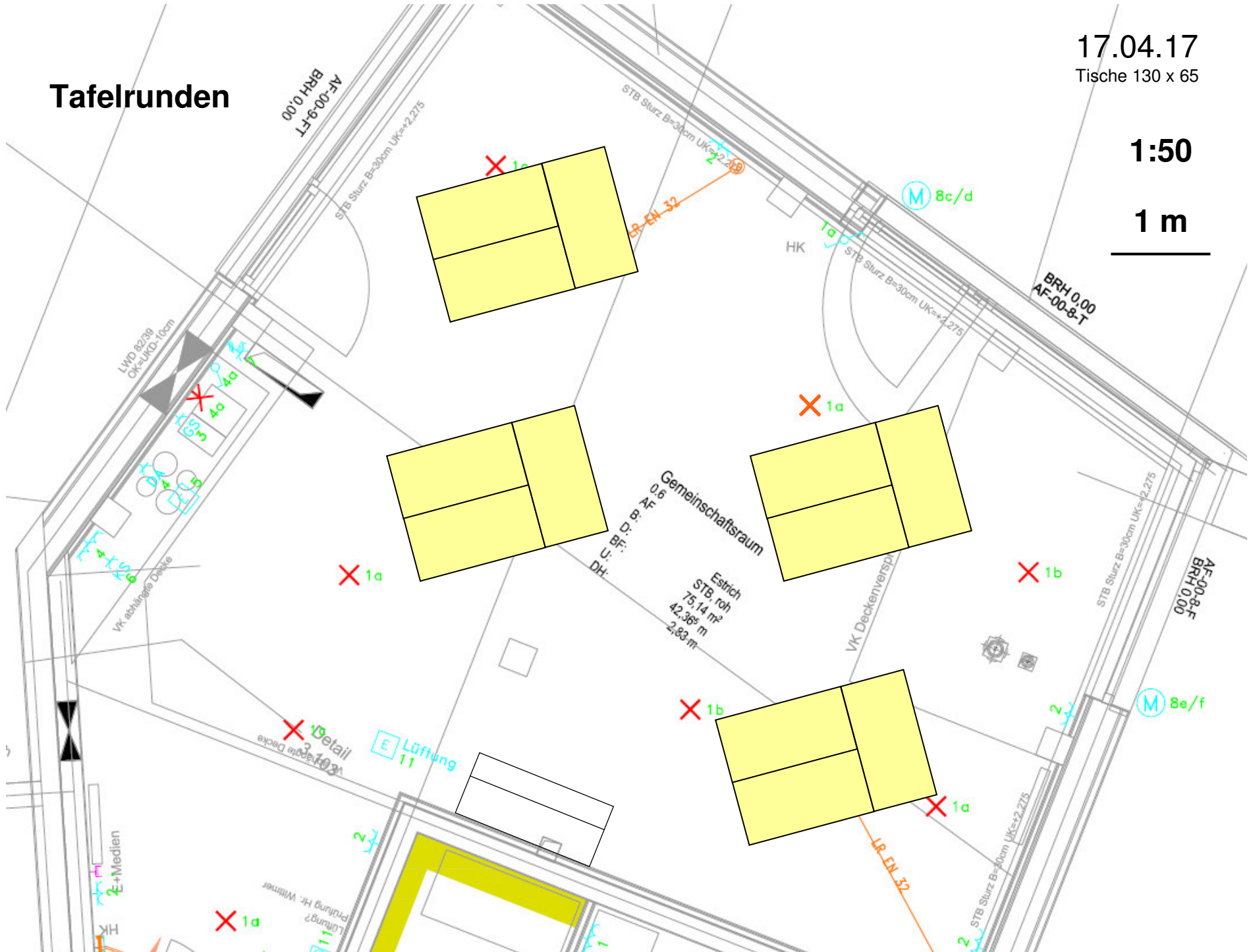
Tafelrunden

17.04.17

Tische 130 x 65

1:50

1 m



Kinobestuhlung

16.05.17
Stühle 60 x 60
Reihenabstand 100

1:50

1 m

